

# plunge pool | 8m<sup>2</sup>

#P04

#yourprojects

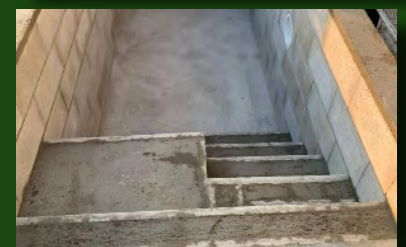
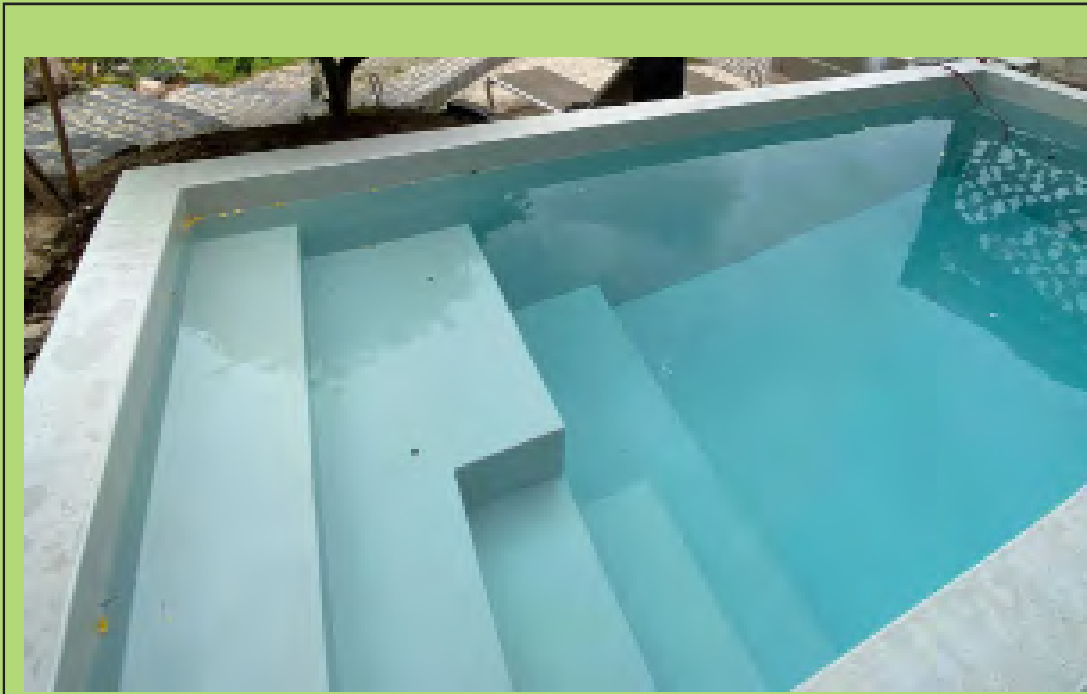
size: 8m<sup>2</sup>

material: [premium PLUS-set](#) (PU top coat)

colour: RAL7035, light grey

realisation: private customer

[DeinTeich.de](#)  
Teich Pool Dach



For this GRP plunge pool we used the [DeinTeich.de premium-PLUS set](#) with epoxy resin, glass fabric and polyurethane top coat.

For the GRP (glass reinforced plastic) diving pool, the [HP-E80FS epoxy resin](#) was first applied to the concrete substrate as a primer. This was followed by the [HP-E30TLS laminating resin](#) and three layers of [HP-B320/635E glass fabric](#) as a laminate, which gives the dip tank strength and stability.

Finally, the [polyurethane topcoat HP-PUR-PLUS](#) in RAL 7035-light gray was applied as a colored top coat.

Whether you want to build a GRP garden pond, swimming pond or whirlpool yourself - DeinTeich.de offers the right coating set for your project!

Would you like to know more about the project?  
Then simply click on the button and send our team an email...

...your question on the project

Discover more projects:

