

covered pool | 20 m²

#P02

#yourprojects

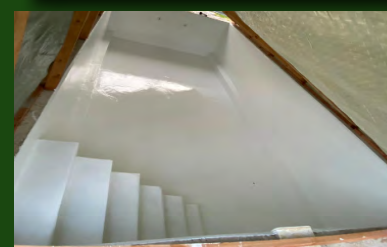
size: 20m²

material: [premium PLUS-set](#) (PU top coat)

colour: RAL9003, signal white

realisation: private customer

[DeinTeich.de](#)
Teich Pool Dach



For the covered GRP pool, the DeinTeich.de [premium PLUS set](#) with epoxy resin, PU top coat and glass fabric was used.

In the first step, the primer ([epoxy resin HP-E80FS](#)) for the pool made of GRP (glass reinforced plastic) was applied to the concrete substrate.

Then the [laminating resin HP-E30TLS](#) and three layers of [glass fabric HP-B320/635E](#) were applied.

The laminate provides the strength and stability of the GRP pool.

In the final step, the [HP-PUR-PLUS polyurethane topcoat](#) was used for the colored topcoat (RAL 9003-signal white).

Whether you want to build a GRP garden pond, swimming pond or whirlpool yourself - DeinTeich.de offers the right coating set for your project!

Would you like to know more about the project?

Then simply click on the button and send our team an email...

...your question on the project

Discover more projects:

