

# indoor pool | 35m<sup>2</sup>

#POI

#yourprojects

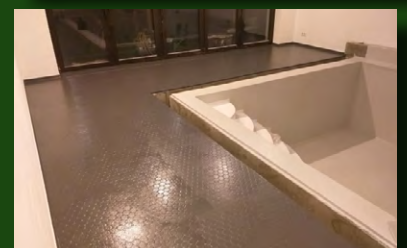
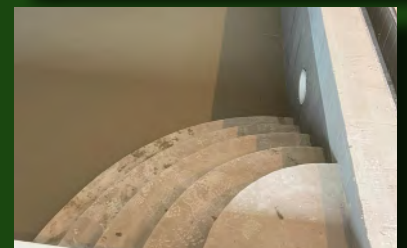
size: 35m<sup>2</sup>

material: [premium PLUS-set](#) (PU top coat)

colour: RAL7035, light grey

realisation: private customer

[DeinTeich.de](#)  
Teich Pool Dach



This GRP indoor pool was coated with the [DeinTeich.de premium PLUS set](#) with epoxy resin, PU top coat and glass fabric.

After concreting the pool made of GRP (glass reinforced plastic), the [epoxy resin HP-E80FS](#) was applied to the substrate as a primer.

The next step was the laminate, consisting of the [HP-E30TLS laminating resin](#) and three layers of [HP-B320/635E glass fabric](#) for the required strength and stability of the GRP indoor pool.

Finally, the [HP-PUR-PLUS polyurethane top coat](#) was used for the colored top layer (RAL 7035-light grey).

Whether you want to build a GRP garden pond, swimming pond or whirlpool yourself - [DeinTeich.de](#) offers the right coating set for your project!

Would you like to know more about the project?

Then simply click on the button and send our team an email...

...your question on the project

Discover more projects:

